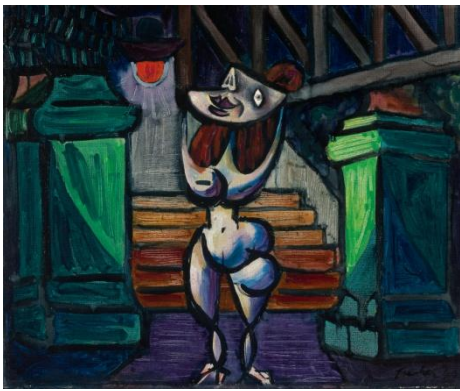


ALBERT TUCKER'S ICONIC *IMAGES OF MODERN EVIL* EXHIBITED TOGETHER FOR THE FIRST TIME IN ALMOST 30 YEARS



Albert Tucker
Image of Modern Evil: Paris Night 1948
oil on canvas on composition board
38.5 x 46.5 cm
National Gallery of Australia, Canberra
Gift of the artist 1985
© Barbara Tucker

Albert Tucker
Image of Modern Evil: Demon Dreamer 1943
oil on paper on cardboard
40.8 x 50.8 cm
National Gallery of Australia, Canberra
Gift of the artist 1982
© Barbara Tucker



Heide Museum of Modern Art presents Albert Tucker's *Images of Modern Evil*, exhibiting in Heide III from 19 March-26 June.

Developed in Melbourne at the height of World War II, the series is a body of work of resounding innovation that was to secure and characterise the artist's artistic reputation, and help signal a new era in Australian art. They stand as a milestone in the evolution of a home-grown, vernacular Australian modernism.

Though not initially conceived as a finite group, unlike Sidney Nolan's Ned Kelly suite, there are several distinguishing features. A female figure appears in each work—in many cases a hybridised 'protoplasmic' figure, as Tucker called it—with the body reduced to its raw and sexualised elements. The paintings are all set at night, and Tucker's now iconic and omnipresent leitmotif, the crescent shape, is used to represent the simplified, exaggerated smiling lips of the artist's subjects. It provides a focus for each work and functions as a connecting element between them.

While the series has come to dominate discussions of Tucker's artistic contributions, it failed to attract critical or popular success during the 1940s. This exhibition aims to investigate the reception the series received, consider Tucker's contemporaneous and retrospective ruminations on it, and reassess the subsequent notoriety of the *Images of Modern Evil*, drawing on relevant correspondence, interviews, photographs and related archive material.

Tucker kept *Images of Modern Evil* series together for more than thirty years, before 28 of the 40 constituent works were acquired for the collection of the National Gallery of Australia. This will be the

Media release



first time that all locatable works in the series have been displayed together.

For further media enquiries, please contact:

Nicole Kenning, Marketing & Communications
Coordinator E nicolek@heide.com.au | T 9850 1500

Janet Wells, Marketing & Communications Manager
E janetw@heide.com.au | T 9850 1500

Heide Museum of Modern Art

7 Templestowe Road
Bulleen Victoria 3105
heide.com.au

Exhibition admission:

Adult \$12, Senior \$10, Concession \$8
Gardens & Sculpture Park: FREE

Open daily 10am–5pm
Closed Mondays

