

## LOST PAINTINGS

### ALBERT TUCKER: IMAGES OF MODERN EVIL



Image of Modern Evil 18 (possibly) (1945)



Study for Image of Modern Evil 20 (1945)

Heide Museum of Modern Art is seeking information on the whereabouts of 6 paintings by Albert Tucker from his eponymous **Images of Modern Evil** series.

The museum is hoping to include these works in a forthcoming exhibition **Albert Tucker: Images of Modern Evil** which opens to the public on 19 March 2011.

Developed in Melbourne at the height of World War II, the series is a body of work of resounding innovation that was to secure and characterise the artist's reputation, and signal a new era in Australian art. They stand as a milestone in the evolution of a home-grown, vernacular Australian Modernism.

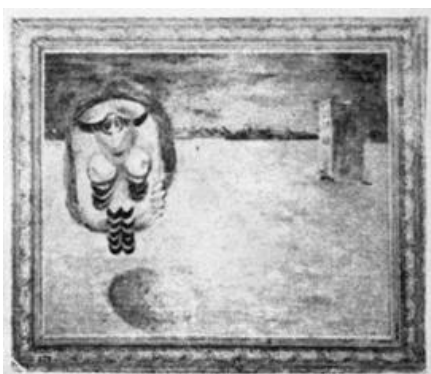
Though not initially conceived as a finite group, unlike Sidney Nolan's Ned Kelly suite, there are several distinguishing features. A female figure appears in each work—in many cases a hybridised 'protoplasmic' figure, as Tucker called it—with the body reduced to its raw and sexualised elements. The paintings are all set at night, and Tucker's now iconic and omnipresent leitmotif, the crescent shape, is used to represent the simplified, exaggerated smiling lips of the artist's subjects. It provides a focus for each work and functions as a connecting element between them.

The resulting series—never exhibited in its entirety before—comprises some 39 paintings created between 1943 and 1948, and is accompanied by many supporting works on paper and studies. While Tucker's son, Sweeney Reed exhibited 28 paintings at his Fitzroy gallery in 1972, and 30 were shown in the artist's 1990 retrospective at the National Gallery of Victoria, Heide's exhibition will see all locatable works assembled for exhibition for the first time.

Of the 39 works identified as part of the series, 33 have been sourced from institutional and private collections. There are, however, 6 works which have not been located:



Image of Modern Evil 27 (1946)



Nostalgic Night (1943)

**Image of Modern Evil 7** (1944, location unknown since at least 1969); **Image of Modern Evil 18** (1945–47, location unknown since at least 1969); **Image of Modern Evil 20** (1945, missing from the artist's studio since the 1990s); **Image of Modern Evil 27** (1946); **Images of Modern Evil 4** (1943, location unknown since 1969) and **Image of Modern Evil 34** (last exhibited at the Museum of Modern Art and Design, Melbourne, in 1961).

In addition, the museum is keen to find a related painting missing since 1943: **Nostalgic Night** (1943).

The works are likely held in private collections in Australia.

**Albert Tucker: Images of Modern Evil** is the centrepiece of Heide Museum of Modern Art's 30<sup>th</sup> birthday program.

---

**For further media enquiries, please contact:**

Ava Saunders, Marketing & Communications  
Assistant  
E [avas@heide.com.au](mailto:avas@heide.com.au) | T 9850 1500

Nicole Kenning, Marketing & Communications Manager  
E [nicolek@heide.com.au](mailto:nicolek@heide.com.au) | T 9850 1500

---

**Heide Museum of Modern Art**

7 Templestowe Road  
Bulleen VIC 3105  
[heide.com.au](http://heide.com.au)

**Admission**

Exhibitions: Adult \$12, Senior \$10, Concession \$8  
Gardens & Sculpture Park: FREE

Open daily 10am–5pm.  
Closed Mondays.

**Media release**

**Heide  
Museum of  
Modern Art**  
*Heide*